



Demographics Continent Breakdown

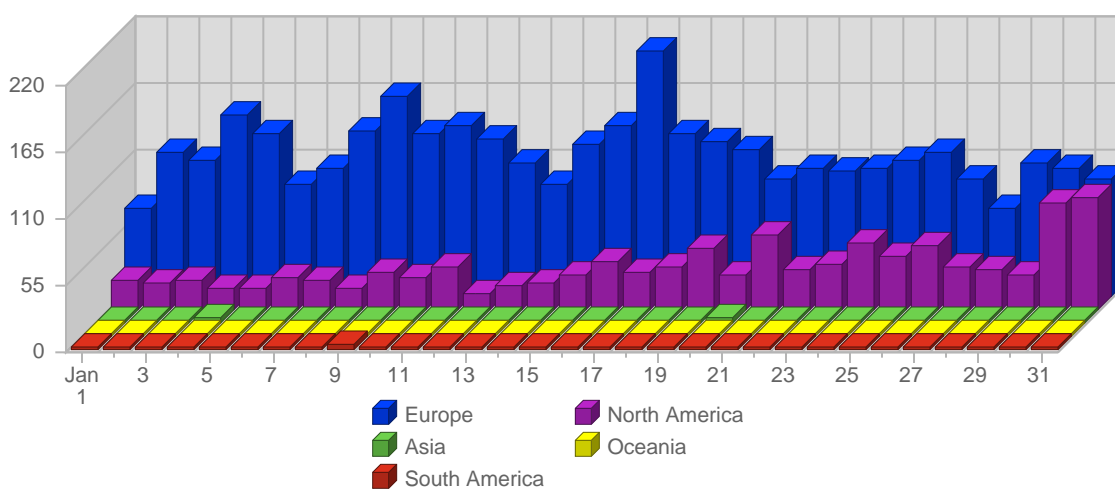
Report Description







Report Description: Continents that Visitors came from during the month of January 2007
 Report Range: Month of January 2007
 Report Scope: Historical Data
 List Size: n/a

Breakdown



Breakdown



#		Continent	Total Visits	Average Visits Historically	Change	Percent of Visits
1.		Europe	3,664	-	+3,664 ▲	75,89%
2.		North America	1,091	-	+1,091 ▲	22,60%
3.		Asia	42	33,50	+42 ▲	0,87%
4.		Oceania	14	15.00	+14 ▲	0,29%
5.		South America	14	16,50	+14 ▲	0,29%
6.		Africa	3	-	+3 ▲	0,06%
			4,828	65		